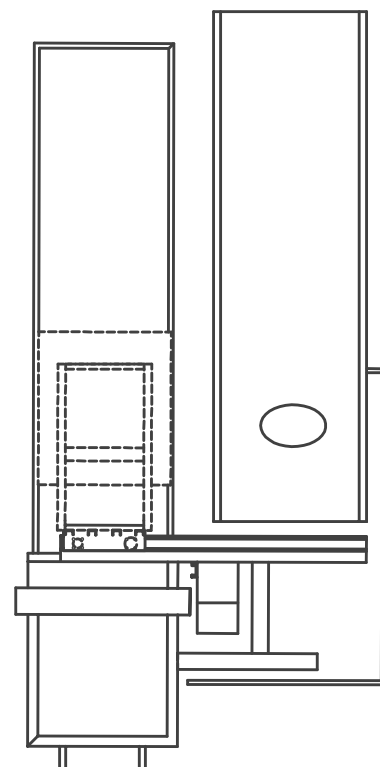




*GETTING EXPERIENCE, BUILDING INNOVATION!*

D 1C-5 F.1500    DEPALLETISING MACHINE WITH A MAGNETIC HEAD FOR FULL TINPLATE CANS



<i>PERFORMANCE MACHINERY</i>	
<i>MANUFACTURING</i>	<i>11 layers composed of 286 cans of 500 gr</i>
	<i>10 layers composed of 156 cans of 1000 gr</i>
	<i>8 layers composed of 64 cans of 3000 gr</i>
	<i>5 layers composed of 64 cans of 5000 gr</i>

<i>TECHNICAL DETAILS</i>	
<i>WEIGHT</i>	<i>4500 Kg</i>
<i>BUILDING MATERIAL</i>	<i>Stainless Steel AISI 304</i>
<i>VOLTAGE</i>	<i>380V v50 Hz. 3</i>
<i>COMAND VOLTAGE</i>	<i>24 Volt DC/AC</i>
<i>POWER</i>	<i>5 Kw</i>

<i>COMPONENTS</i>	
<i>MOVENT MANAGEMENT SYSTEM</i>	<i>ACOM</i>
<i>INVERTER</i>	<i>Control Techniques</i>
<i>DOOR LOCK SWITCH</i>	<i>Magrini</i>
<i>CONTACTOR AND OVERLOAD RELAYS</i>	<i>Telemecanique</i>
<i>FUSE HOLDERS</i>	<i>Magrini</i>
<i>THERMAL MAGNETIC SWITCHES</i>	<i>Telemecanique</i>
<i>AUXILIARY RELAY</i>	<i>Finder</i>
<i>BUTTONS Ø 22,5</i>	<i>Telemecanique</i>
<i>LAMP LIGHTS Ø 22,5</i>	<i>Telemecanique</i>
<i>PHOTOCELLS</i>	<i>Telemecanique</i>
<i>PROXIMITY SENSORS</i>	<i>Telemecanique</i>
<i>SAFETY COUPLINGS TO LIMIT</i>	<i>Telemecanique</i>
<i>JUNCTION BOXES</i>	<i>RTA</i>
<i>SOLENOID VALVES</i>	<i>Camozzi</i>
<i>MOTORS-REDUCERS</i>	<i>SITI - Motovario</i>
<i>BRAKE MOTORS</i>	<i>Control Techniques</i>
<i>BEARINGS</i>	<i>SKF - FAG - NSK</i>
<i>PLASTIC CONVEYOR BELTS</i>	<i>Habasit</i>

**OPERATING PRINCIPLES:** This machinery depalletizes full tinplate cans automatically. The depalletising machine has a strong structure that consists of a magnetic head with a horizontal and vertical movement.

The workings of the machinery are automatic and controlled by PLC to guarantee a high performance, a simple management and a great reliability over time.

Thanks to a lift track, the operator puts full pallets on motorized rollers that inserts the pallets under a magnetic plate.

This plate picks up the cans layers one-by-one automatically. Then the operator removes the layers separators. The empty pallets are stacked in a specific storage; the cans, unloaded from each layer, go to following operations.

The depalletising machine has an electric PLC control panel, Touch Screen display for diagnosis and settings, and mechanical and electric protections according to current European regulations.



**" Engineering Taylor - Made in Italy "**

**ACOM S.r.l.**

Via I Traversa Ugo foscolo ,5/7 - Tel . 081 954461

84010 S.Egidio M.Albino (SA)

www.acomimballaggio.com - info@acomimballaggio.com



**Acom Imballaggio**